



AIR-C

INSTALLATION SERIES

AIR-C IS A CHANGE FOR ALL TO SEE



NON-COMPROMISING

Great sound or reasonable price? One must find an answer to this question when in the process of choosing a sound system for a fixed installation project. Or at least this is how things used to be.

After more than two years of developing these subcompact installation speakers, MAG Audio engineers have discovered the perfect formula for bringing out the best sound value while keeping the costs incredibly low.

With the introduction of next-generation production methods and carefully established sound quality standards matching the demands of real-life installation projects, the most advanced compact installation series was born.

AIR-C brings together smart design choices, including mounting options, coverage patterns, connectivity options, and weather resistance, to deliver a level of sound that installation speakers in this format have never offered before. A key advantage of the AIR-C line is that the AIR-WS and AIR-WL wall mounts are included as standard. And let's face it: your installation project deserves nothing less.

CREATED TO IMPRESS

Straight out of the box, AIR-C speakers are full of nice surprises. All the models are available in a black or white finish to make sure these instantly blend into your interior. We also offer several impedance options to connect the speakers to Lo-Z professional or Hi-Z installation amplifiers.

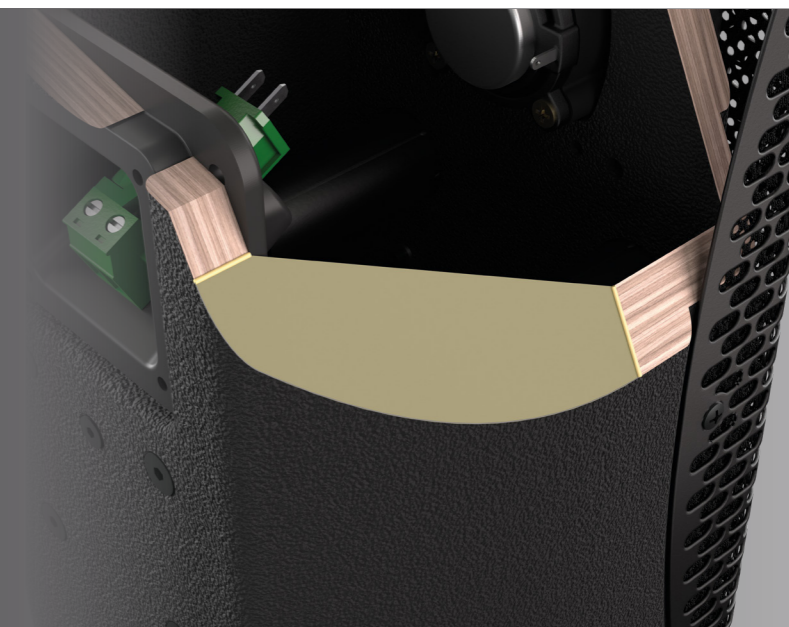
The rotatable horns put the sound right where it belongs while positioning a speaker vertically or horizontally. Several mounting brackets are available to place the speaker anywhere desired: a ceiling, a wall, a corner, ... you name it, this speaker will fit there.

Safety - got you covered. AIR-C series speaker comes with a mounting point to fix a safety cable, so every installation is secure and conforms to any overhead installation safety standard.

But save the best for last; AIR-C series' meticulous sound design process and uncompromising fine-tuning flourished in an astounding Hi-Fi sound quality, capable of creating truly luxurious sound environments.

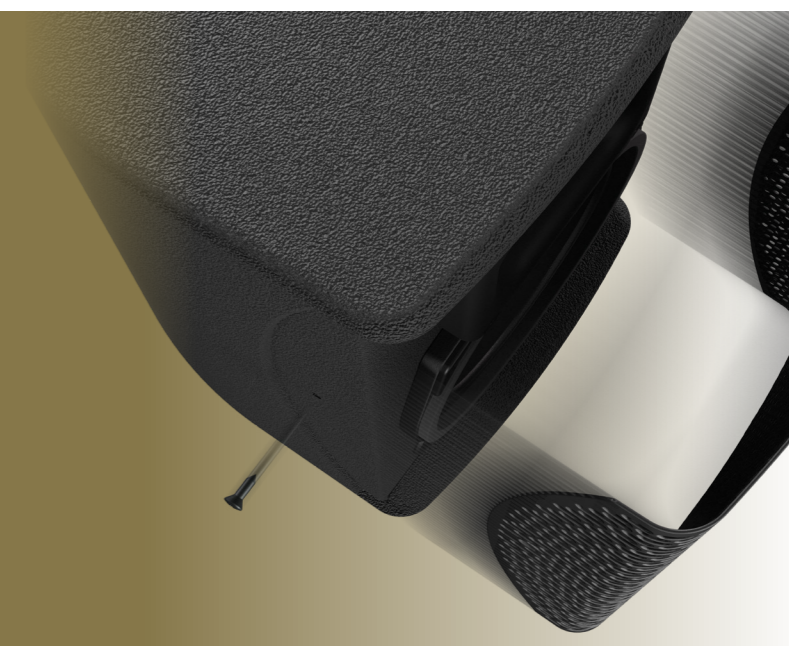
COMPOSITE

AIR-C series uses the proprietary Polycomp® composite technology to create the best enclosure: the polyurethane-wood molded rigid composite design allows no sound compromises by eliminating resonances and internal standing waves.



CONVENIENT

AIR-C series is built for ease of installation and tuning. The grill is simple to remove with just two side bolts and gives access to a dispersion-rotating horn. The operation mode of Hi-Z speakers can easily be chosen using a convenient switch on the back.



CONVERTIBLE

It has never been so easy to put the speaker out of sight and maintain a sound that goes straight into the ears: the rotatable HF horn allows to switch the coverage of the speaker between the 100° x 70° and 70° x 100°, so now both vertical and horizontal placement of the speaker works out just right for your sound application.



AIR-C4/C4T

INSTALLATION SPEAKER



The most compact speaker in the AIR-C series, AIR-C4 has a 4" woofer and an HF driver on a rotatable horn. It can be installed both horizontally or vertically; the base model is available at 16 Ohm with additional 70V / 100V modes in the AIR-C4T.

Frequency Response (-10dB)	90 Hz - 20 kHz
Max SPL *	117 dB
Sensitivity (1W/1m)	88 dB
LF driver	4", 1" VC
HF driver	1" carbon fiber diaphragm, 1" VC, ND magnet
Nominal coverage angle	100° × 70°, rotatable horn
Impedance	16 Ohm (AIR-C4) 16 Ohm / 70V / 100V (AIR-C4T)
Nominal power	50 W
Connectors	Phoenix
Dimensions (W × H × D)	146 × 260 × 154 mm 5.75" × 10.24" × 6.1"
Weight net / shipping	2.7 kg / 3.5 kg (6 lbs / 7.7 lbs)
Mounting	VESA 50 × 50, AIR-WS included Safety mounting point
Weather protection	IP54 rated
Enclosure material	Polycomp®, wear-resistant paint
Speaker protection	Steel grill, acoustically transparent backing

AIR-C5/C5T

INSTALLATION SPEAKER



The compact yet powerful AIR-C5 has a 5.25" woofer and an HF driver on a rotatable horn. It can be installed either in a horizontal or vertical orientation, and it's available at 16- Ohm as the base model and with additional 70V / 100V modes in the AIR-C5T model.

Frequency Response (-10dB)	80 Hz - 20 kHz
Max SPL *	119.5 dB
Sensitivity (1W/1m)	89 dB
LF driver	5.25", 1.25" VC
HF driver	1" carbon fiber diaphragm, 1" VC, ND magnet
Nominal coverage angle	100° × 70°, rotatable horn
Impedance	16 Ohm (AIR-C5) 16 Ohm / 70V / 100V (AIR-C5T)
Nominal power	70 W
Connectors	Phoenix
Dimensions (W × H × D)	160 × 277 × 157 mm 6.3" × 10.9" × 6.2"
Weight net / shipping	3.6 kg / 4.4 kg (7.9 lbs / 9.7 lbs)
Mounting	VESA 50 × 50, AIR-WS included Safety mounting point
Weather protection	IP54 rated
Enclosure material	Polycomp®, wear-resistant paint
Speaker protection	Steel grill, acoustically transparent backing

Get ready for a powerful punch! AIR-C6 is based on a 6.5" woofer and an HF driver on a rotatable horn. It can be installed either in a horizontal or vertical orientation, and it's available in 8- and 16-Ohm versions for optimal wiring and amplifier connection.

Frequency Response (-10dB)	80 Hz - 20 kHz
Max SPL *	125 dB
Sensitivity (1W/1m)	91 dB
LF driver	6.5", 1.75" VC
HF driver	0.75" throat, 1.35" VC
Nominal coverage angle	90° × 60°, rotatable horn
Impedance	8 Ohm (AIR-C6-8) 16 Ohm (AIR-C6-16)
Nominal power	150 W
Connectors	Phoenix
Dimensions (W × H × D)	200 × 350 × 200 mm 7.9" × 13.8" × 7.9"
Weight net / shipping	6.4 kg / 7.2 kg (14.1 lbs / 15.9 lbs)
Mounting	VESA 75 × 75, AIR-WL included Safety mounting point
Weather protection	IP54 rated
Enclosure material	Polycomp®, wear-resistant paint
Speaker protection	Steel grill, acoustically transparent backing

AIR-C6

INSTALLATION SPEAKER



The most powerful AIR-C8 has a long-excursion 8" woofer and an HF driver on a rotatable horn. It can be installed either in a horizontal or vertical orientation, and it's available in 8- and 16-Ohm versions for optimal wiring and amplifier connection.

Frequency Response (-10dB)	75 Hz - 20 kHz
Max SPL *	128 dB
Sensitivity (1W/1m)	93 dB
LF driver	8", 2" VC
HF driver	0.75" throat, 1.35" VC
Nominal coverage angle	90° × 60°, rotatable horn
Impedance	8 Ohm (AIR-C8-8) 16 Ohm (AIR-C8-16)
Nominal power	200 W
Connectors	Phoenix
Dimensions (W × H × D)	240 × 417 × 242 mm 9.5" × 16.4" × 9.5"
Weight net / shipping	9.4 kg / 10.2 kg (20.7 lbs / 22.5 lbs)
Mounting	VESA 75 × 75, AIR-WL included Safety mounting point
Weather protection	IP54 rated
Enclosure material	Polycomp®, wear-resistant paint
Speaker protection	Steel grill, acoustically transparent backing

AIR-C8

INSTALLATION SPEAKER



AIR-C24

INSTALLATION SPEAKER



Despite a small visual footprint, the AIR-C24 is a high-performing system with two 4" woofers and an HF driver on a rotatable horn. It can be installed either in a horizontal or vertical orientation and is available in 8- Ohm for ease of parallel usage.

Frequency Response (-10dB)	85 Hz - 20 kHz
Max SPL *	123 dB
Sensitivity (1W/1m)	91 dB
LF driver	2 x 4", 1" VC
HF driver	1" carbon fiber diaphragm, 1" VC, ND magnet
Nominal coverage angle	100° x 70°, rotatable horn
Impedance	8 Ohm
Nominal power	100 W
Connectors	Phoenix
Dimensions (W x H x D)	385 x 134 x 146 mm 15.2" x 5.3" x 5.8"
Weight net / shipping	4.4 kg / 5.2 kg (9.7 lbs / 11.5 lbs)
Mounting	VESA 50 x 50, AIR-WS included Safety mounting point
Weather protection	IP54 rated
Enclosure material	Polycomp®, wear-resistant paint
Speaker protection	Steel grill, acoustically transparent backing

AIR-C ACCESSORIES

AIR-WS wall mounting



Compact and simple to use, the AIR-MVS is a vertical mounting adapter that allows pan and tilt control. It is mounted to the speaker using VESA 50 x 50 mounting sockets and it's compatible with the AIR-C4/ C4T, AIR-C5/C5T, and AIR-C24 installation speakers.

AIR-WL wall mounting



Compact and simple to use, the AIR-MVL is a vertical mounting adapter that allows pan and tilt control. It is mounted to the speaker using VESA 75 x 75 mounting sockets and is compatible with AIR-C6 and AIR-C8 installation speakers.

AIR-CS ceiling mounting



The AIR-MHS is a steerable ceiling mounting bracket: it allows for selecting the optimal tilt, and 360° rotation of the speaker. It is mounted to the speaker using VESA 50 x 50 mounting sockets and it's compatible with AIR-C4/ C4T, AIR-C5/C5T, and AIR-C24 installation speakers.

AIR-CL ceiling mounting



The AIR-MHL is a steerable ceiling mounting bracket: it allows for selecting the optimal tilt, and 360° rotation of the speaker. It is mounted to the speaker using VESA 75 x 75 mounting sockets and is compatible with AIR-C6 and AIR-C8 installation speakers.

AIR-CX: HIGH-OUTPUT COAXIAL INSTALLATION LOUDSPEAKERS

The AIR-C Series set a new benchmark for sound quality and ease of deployment in compact installations. However, some applications require higher power and greater dynamic capability. AIR-CX was developed specifically to meet these demands as a high-output extension of the platform.

By employing a coaxial loudspeaker design, AIR-CX retains a compact footprint while delivering true point-source behavior, increased power handling, and higher SPL capability – without compromising the straightforward integration that defines the AIR-C family.

Built around a two-way coaxial transducer architecture, AIR-CX delivers coherent point-source performance with uniform conical coverage, ensuring predictable and symmetrical behavior in both horizontal and vertical orientations.

Multiple mounting options, including U-brackets and rear VESA 100 x 100 compatibility, enable fast and clean deployment across diverse environments. AIR-CX extends well beyond background and fill applications, making it suitable for clubs, performance venues, houses of worship, and multipurpose spaces where sound reinforcement must remain precise, controlled, and visually low-profile.

Available in black or white finishes.



AIR-CX10

INSTALLATION SPEAKER

AIR-CX10 is a passive two-way 10" coaxial loudspeaker engineered for balanced output, clarity, and coverage in medium to large installations. Its 90° x 90° conical dispersion pattern ensures consistent sound whether mounted vertically or horizontally, reducing on-site design compromises and simplifying system layout.

Frequency Response (-10dB)	65 Hz - 18 kHz
Max SPL *	120 dB
Sensitivity (1W/1m)	95 dB
LF driver	10" coaxial, 2.5" VC
Nominal coverage angle	90° x 90°
Impedance	4 Ohm/ 8 Ohm/ 16 Ohm
Nominal power	300 W
Connectors	Phoenix
Dimensions (W x H x D)	305 x 460 x 278 mm 12.01" x 18.11" x 10.96"
Mounting	VESA 100 x 100; 8 x M10 Mounting points; M10 safety point
Enclosure material	Plywood, wear-resistant paint
Speaker protection	Steel grill, acoustically transparent backing



AIR-CX12

INSTALLATION SPEAKER

AIR-CX12 is a passive two-way 12" coaxial loudspeaker designed for installations that require higher output headroom and greater low-frequency presence in medium-to-large venues. The larger driver size delivers increased efficiency and dynamic capability while maintaining controlled, uniform coverage.

Its 90° x 90° symmetrical conical dispersion ensures consistent sound performance regardless of mounting orientation, providing flexibility during on-site integration and simplifying system layout.

Frequency Response (-10dB)	55 Hz - 18 kHz
Max SPL *	121 dB
Sensitivity (1W/1m)	97 dB
LF driver	12" coaxial, 2.5" VC
Nominal coverage angle	90° x 90°
Impedance	4 Ohm/ 8 Ohm/ 16 Ohm
Nominal power	300 W
Connectors	Phoenix
Dimensions (W x H x D)	350 x 524 x 318 mm / 13.78" x 20.63" x 12.51"
Mounting	VESA 100 x 100; 8 x M10 Mounting points; M10 safety point
Enclosure material	Plywood, wear-resistant paint
Speaker protection	Steel grill, acoustically transparent backing



AIR-CX15 is a passive two-way 15" coaxial loudspeaker delivering the highest low-frequency output and maximum SPL performance in the AIR-CX range. Its 90° x 90° conical dispersion ensures consistent sound in both vertical and horizontal installations, making it ideal for large-scale venues where power and control are critical.

Frequency Response (-10dB)	50 Hz - 18 kHz
Max SPL *	123 dB
Sensitivity (1W/1m)	98 dB
LF driver	15" coaxial, 2.5" VC
Nominal coverage angle	90° x 90°
Impedance	4 Ohm/ 8 Ohm/ 16 Ohm
Nominal power	300 W
Connectors	Phoenix
Dimensions (W x H x D)	422 x 640 x 347 mm / 16.61" x 25.20" x 13.68"
Mounting	VESA 100 x 100; 8 x M10 Mounting points; M10 safety point
Enclosure material	Plywood, wear-resistant paint
Speaker protection	Steel grill, acoustically transparent backing



AIR-CX ACCESSORIES

WMT wall mounting



The WMT from MN Mounting is a compact and low-profile indoor speaker wall mount. The WMT mount fits all loudspeakers with VESA 75 x 75 and 100 x 100. The WMT has three static vertical tilt angles: 0°, 5°, and 10°.

WRM wall arm mounting



The WRM from MN Mounting is a heavy-duty speaker wall mount with pan and tilt functionality. The WRM mount fits all loudspeakers with VESA 75 x 75 and 100 x 100. The WRM-25 is the way to go in all immersive sound applications, given its pan ability of 90° to 90° rotation and 5° to +25° vertical tilt.

Vertical bracket

V-AIR-10, V-AIR-12, V-AIR-15



The V-AIR is a vertical bracket compatible for AIR-CX series is the way to go in sound speakers, given its 0° to 90° vertical tilt. This bracket has a two-point mount, which increases its reliability.

Horizontal bracket

H-AIR-10, H-AIR-12, H-AIR-15



The H-AIR is a Horizontal bracket compatible for AIR-CX series is the way to go in sound speakers, given its 0° to 90° vertical tilt. This bracket has a two-point mount, which increases its reliability.

AIR-S26

PASSIVE INSTALLATION SUBWOOFER



AIR-S26 is a subcompact subwoofer for installations where space is limited and a low visual profile is a must. It houses two 6.5" high excursion woofers and has an improved low-noise vent design. It can be mounted onto the surface using rear or side mounting points.

Frequency Response (-10dB)	41 - 200 Hz
Max SPL *	130.5 dB
Sensitivity (1W/1m)	94 dB
LF driver	2 x 6.5", 1.75" VC
Impedance	4 Ohm
Nominal power	300 W
Connectors	Phoenix
Dimensions (WxHxD)	516 x 165 x 500 mm 20.3" x 6.5" x 16.7"
Weight net / shipping	13.9 kg / 14.9 kg (30.6 lbs / 32.8 lbs)
Mounting	VESA 200 x 200 Ceiling bracket mounting points M10 safety mounting point
Weather protection	IP54 rated
Enclosure material	Plywood, wear-resistant paint
Speaker protection	Steel grill, acoustically transparent backing

AIR-S26A

POWERED INSTALLATION SUBWOOFER



AIR-S26A is a subcompact powered installation subwoofer tailor-made to bring a smooth and deep low-frequency reinforcement into settings where space is critical and a visual low profile is a must. It is based on two 6.5" high excursion woofers, a noise-free vent design, and state-of-the-art amplification for precision sound tuning.

AIR-S26A can be mounted onto the wall using the rear or side mounting points and also placed in a narrow niche.

Frequency Response (-10dB)	41 - 200 Hz
Max SPL(half-space)	122 dB
Driver	2 x 6.5", 1.75" VC
Amplifier power	600 W
Amplifier	Class D with DSP, passive cooling
Connector	XLR input, RCA input, C14 mains
Dimensions (W x H x D)	516 x 165 x 516 mm 20.3" x 6.5" x 20.3"
Net weight	14.6 kg / 32.2 lbs
Shipping weight	15.6 kg / 34.4 lbs
Mounting	VESA 200 x 200 Ceiling bracket mounting points M10 safety mounting point
Enclosure	Plywood, wear-resistant paint
Speaker protection	Steel grill, acoustically transparent backing

AIR-S ACCESSORIES

AIR-WB wall mounting



The AIR-SW is designed specifically to be used with the AIR-S26 installation subwoofer. It follows a convenient two-component design for a simple installation workflow and ensures safe low-profile wall mounting of the compact installation subwoofer.

AIR-CB-26 ceiling mounting



Ceiling subwoofer mounting is made simple with the AIR-SC, a low-profile mounting bracket. It is designed to pair with the AIR S26 installation subwoofer. The side mounting points of the subwoofer make the installation process go fast, easy, and secure.

AIR-S APPLICATIONS



ON THE WALL



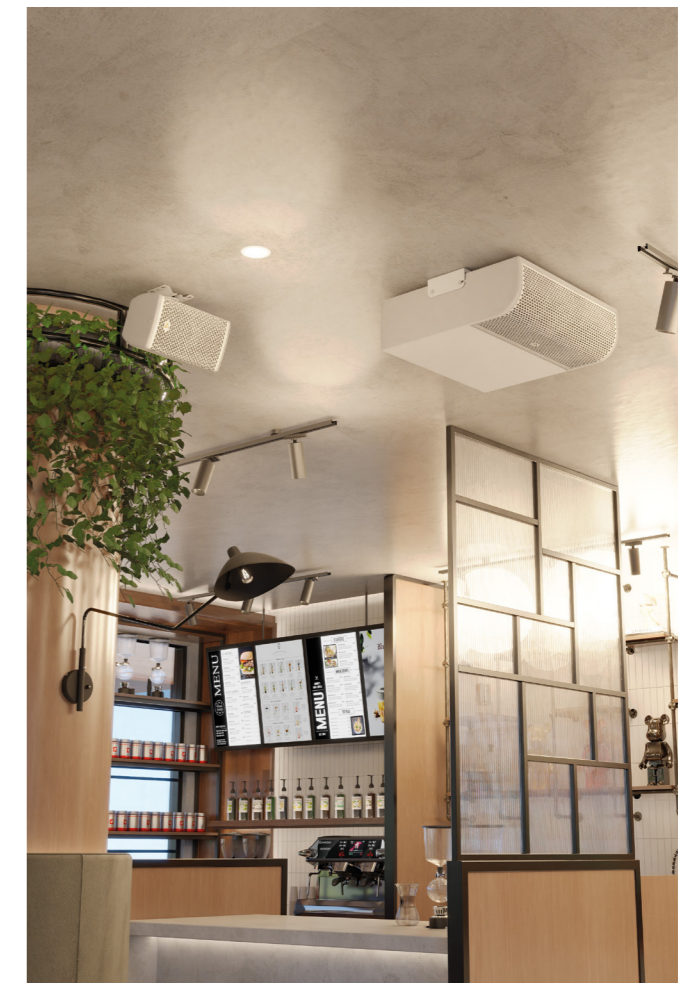
CEILING



FLOOR



IN-WALL





2 Merezhna str., Bila Tserkva,
Kyiv region, 09100, Ukraine
Tel./Fax.: +38 044 2774789
e-mail: info@mag-audio.com
www.mag-audio.com