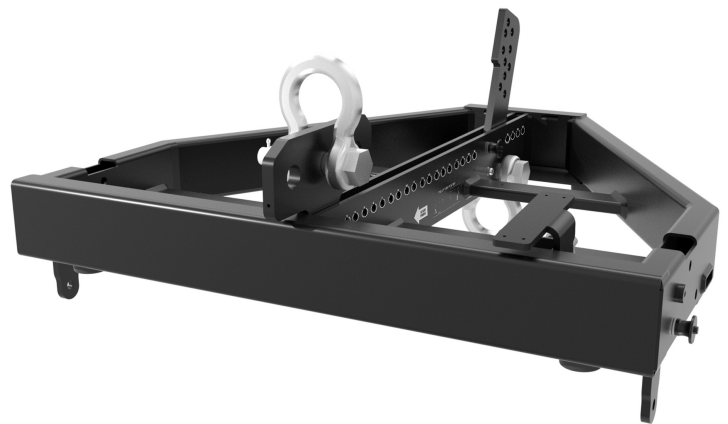


FL-B HDL 30

FLY BAR

DESCRIPTION

Flybar for HDL 30-A or HDL 38-AS + 1x Pickup Tab with Shackle + Stacking Bar + Mounting Bracket for inclinometer. Pins included.



FEATURES

- To suspend up to 20 HDL 30-A modules
- Strong steel construction

**TECHNICAL SPECIFICATIONS**

General specifications	Max number of speaker	20
Standard compliance	CE marking:	Yes
Physical specifications	Cabinet/Case Material:	Steel
	Color:	Black
Size	Weight:	21.2 kg / 46.74 lbs
Shipping informations	Package Height:	125 mm / 4.92 inches
	Package Width:	645 mm / 25.39 inches
	Package Depth:	495 mm / 19.49 inches
	Package Weight:	29.8 kg / 65.7 lbs

PART NUMBER

- **13360380**

FL-B HDL 30

EAN 8024530015114

