

# Components

## Speaker Technology

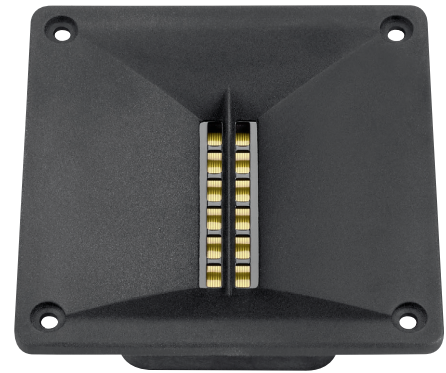
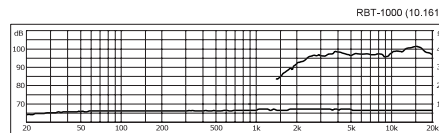
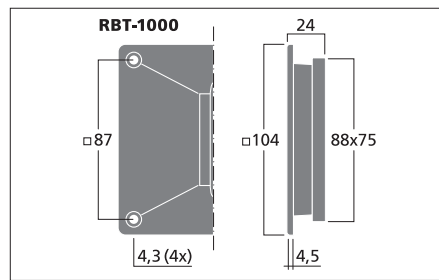
### RBT-1000

Order No. 10.1610

80 W

#### Ribbon tweeter for PA and hi-fi, 40 W, 6 $\Omega$

- Magnetostatic speaker with waveguide
- Tweeter system from the L-RAY/1000
- Fine and brilliant reproduction of the high frequencies
- For use from 3,000 Hz (hi-fi) or 4,000 Hz (PA) on via 18 dB filter
- Diecast aluminium horn front attachment, neodymium magnet
- Vertical or horizontal mounting possible due to square front panel



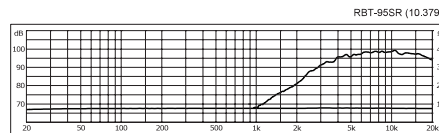
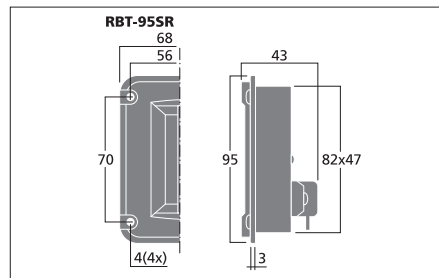
### RBT-95SR

Order No. 10.3790

70 W

#### Ribbon tweeter, 40 W, 8 $\Omega$

- Magnetostatic speaker with horn front attachment
- Compared with RBT-95 and RBT-95SQ, increased power capability
- Neodymium magnet system
- Fine and brilliant reproduction of the high frequencies, high efficiency
- Ideally suited for 3-way speaker systems, 4-way speaker systems or for adding tweeters to full range speakers
- Slightly convex plastic front panel with vertical ruffle



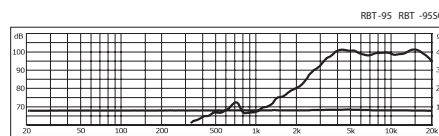
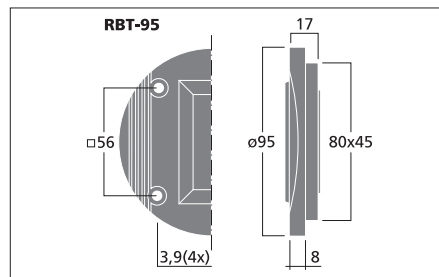
### RBT-95

Order No. 10.2250

60 W

#### Ribbon tweeter, 30 W, 8 $\Omega$

- Magnetostatic speakers of a high efficiency
- Perfectly fine dynamic reproduction of the high frequencies and the brilliance frequency range
- Very light sound of low distortion which particularly improves the stereophony in applications from 5 kHz on
- By adding a super tweeter above 8-10 kHz, e.g. even high-quality full range systems can be further improved



Model	RBT-1000	RBT-95SR	RBT-95
Impedance (Z)	6 $\Omega$	8 $\Omega$	8 $\Omega$
Frequency range	fx-22,000 Hz	fx-22,000 Hz	fx-22,000 Hz
Resonant frequency (fs)	1.6 kHz	3,500 Hz	4,500 Hz
Power rating (RMS)	40 W	40 W	30 W
Peak music power output (MAX)	80 W	70 W	60 W
Sensitivity	96 dB/W/m	98 dB/W/m	98 dB/W/m
Mounting cutout	94 x 94 mm	82 x 47 mm	80 x 45 mm
Dimensions	104 x 104 x 24 mm	68 x 95 x 43 mm	$\varnothing$ 95 x 17 mm
Weight	0.24 kg	0.18 kg	0.11 kg