

Components

Speaker Technology

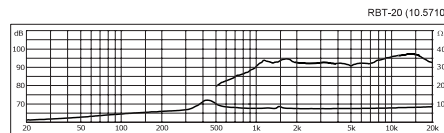
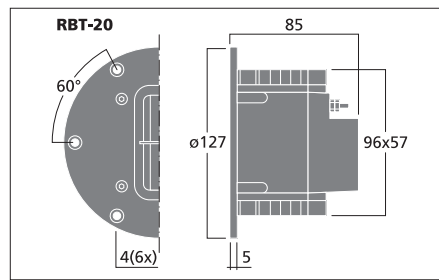
RBT-20

Order No. 10.5710

50 W PAAR PAIR

Pair of high-end ribbon tweeters, matched, 25 W, 8 Ω

- Real ribbon tweeter with neodymium magnet system and transformer
- Fine and brilliant reproduction of the high frequencies
- Smooth, unembossed aluminium sandwich cone: 12 x 60 x 0.01 mm
- For use from 2,300 Hz on via 18 dB filter
- Robust aluminium front panel with waveguide and protective grille



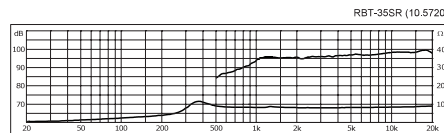
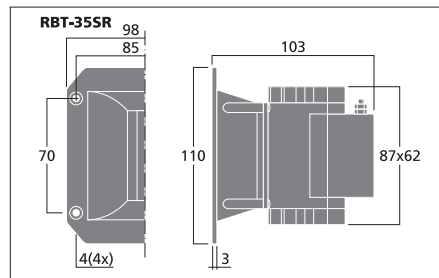
RBT-35SR

Order No. 10.5720

25 W PAAR PAIR

Pair of high-end ribbon tweeters, matched, 12 W, 7 Ω

- Real ribbon tweeter with neodymium magnet system and transformer
- Very high sound pressure level and consistent radiation pattern due to horn front attachment
- Fine and brilliant reproduction of the high frequencies
- Smooth, unembossed aluminium sandwich cone: 9 x 60 x 0.015 mm
- For use from 2,500 Hz on via 18 dB filter
- Horn with mounting flange and protective grille



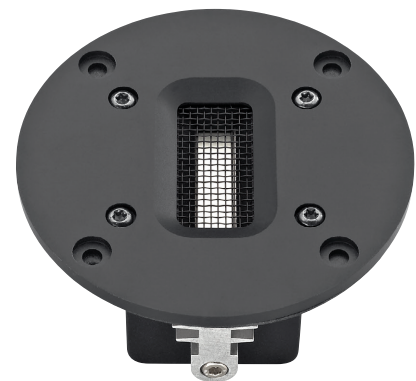
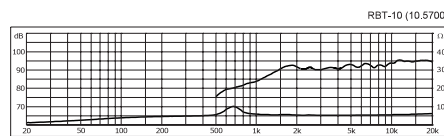
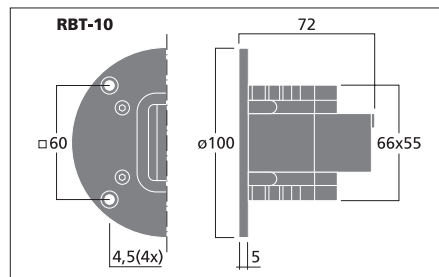
RBT-10

Order No. 10.5700

25 W PAAR PAIR

Pair of high-end ribbon tweeters, matched, 12 W, 5 Ω

- Real ribbon tweeter with neodymium magnet system and transformer
- Fine and brilliant reproduction of the high frequencies
- Smooth, unembossed aluminium sandwich cone: 8 x 38 x 0.015 mm
- For use from 3,500 Hz on via 18 dB filter
- Robust aluminium front panel with waveguide and protective grille



Model	RBT-20	RBT-35SR	RBT-10
Impedance (Z)	8 Ω	7 Ω	5 Ω
Frequency range	1,200-40,000 Hz	1,100-30,000 Hz	2,000-40,000 Hz
Power rating (RMS)	25 W	12 W	12 W
Peak music power output (MAX)	50 W	25 W	25 W
Sensitivity	94 dB/W/m	96 dB/W/m	90 dB/W/m
Mounting cutout	96 x 57 mm	87 x 62 mm	66 x 55 mm
Dimensions	Ø 127 mm x 85 mm	98 x 110 x 103 mm	Ø 100 mm x 72 mm
Weight	1.654 kg	1.27 kg	0.87 kg