

Components

Speaker Technology

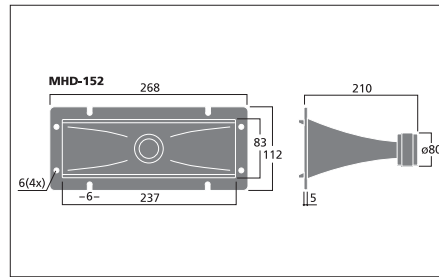
MHD-152

Order No. 10.4070

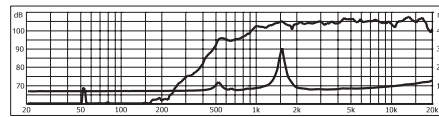


PA mid-high range horn speaker, 75 W, 8 Ω

- Linear frequency response
- Excellent dynamic characteristics for a wide range of PA applications
- Robust diecast aluminium horn
- Replacement voice coil MHD-152/VC is available at option



MHD-152 (10.4070)



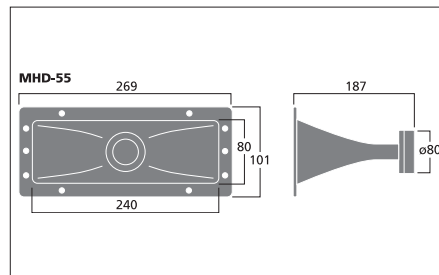
MHD-55

Order No. 10.0240

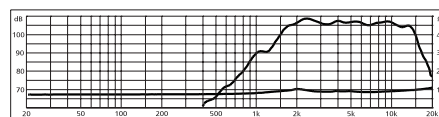


PA horn tweeter, 30 W, 8 Ω

- Plastic version
- Good efficiency
- Wide bandwidth, suitable for general PA applications
- Replacement voice coils are available at option (MHD-1255/VC)



MHD-55 (10.0240)



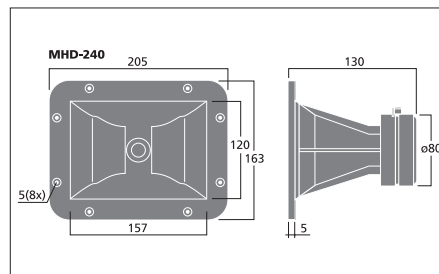
MHD-240

Order No. 10.3890

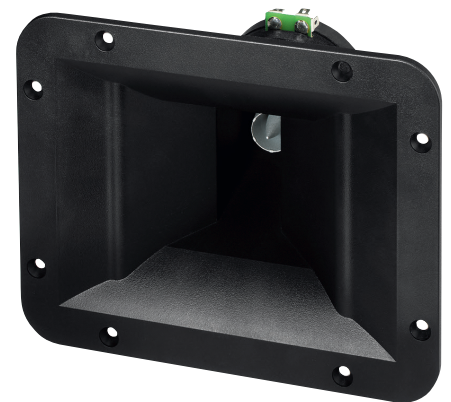
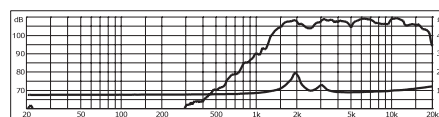


PA horn tweeter, 40 W, 8 Ω

- CD horn tweeter (constant directivity)
- Very wide bandwidth reproduction
- Very good medium efficiency
- Special horn design
- Diecast reflector in front of the cone
- Highly consistent radiation pattern
- Suitable for any PA application
- Replacement voice coil MHD-230/VC is available at option



MHD-240 (10.3890)



Model	MHD-152	MHD-55	MHD-240
Impedance (Z)	8 Ω	8 Ω	8 Ω
Frequency range	fx-20,000 Hz	fx-15 kHz	fx-20,000 Hz
Resonant frequency (fs)	1.5 kHz	2 kHz	2 kHz
Power rating (RMS)	75 W	30 W	40 W
Peak music power output (MAX)	150 W	55 W	80 W
Sensitivity	105 dB/W/m	103 dB/W/m	107 dB/W/m
Radiation angle	40°/90°	45°/90°	40°/90°
Voice coil diameter	Ø 34.5 mm	Ø 24.6 mm	Ø 25 mm
Mounting cutout	237 x 83 mm	240 x 80 mm	120 x 157 mm
Dimensions	268 x 112 x 210 mm	269 x 101 x 187 mm	205 x 163 x 130 mm
Weight	1.165 kg	0.88 kg	1.135 kg