

# IC-8FD Ceiling Speaker Instruction Manual



The IC-8FD is a compact coaxial ceiling speaker with fire dome, designed to be both aesthetically invisible and give a smooth linear sound. The ceiling speaker blends in with its surroundings whilst the full range response from proprietary drivers creates a fuller, richer, tone with the added protection of a fire dome enclosure.

IC-8FD is designed with the listener and installer in mind. The coaxial drivers give an even 140° conical dispersion ensuring wide coverage while the full range driver gives extra depth to any source. Integrated quick-lock brackets and push connectors for input signal make installation easy.

With a 40 watt, 8" woofer, the IC-8FD can be used as 8 Ohm, 100 V or 70 V using the supplied transformer with 10, 20, 40 (W) 100(V) and 5, 10, 20 (W) 70(V).

The diameter of Ø270 mm x 185 mm deep makes this ceiling speaker very discreet. With a frequency range of 50 Hz – 20 kHz, the IC-8FD is capable of most playback scenarios where louder background audio is required.

The final look of the IC-8FD is an attractive white colour ABS resin finish with complementary grill that is designed to blend into any décor.

Two push fit speaker cable terminals are mounted at the back of the fire dome housing. Com and Input. Voltage and tapping are selectable by turning the toggle switch to the desired setting.

## Key Features:

- Quick-lock system ensures easy installation
- Wide dispersion pattern
- Multiple sizes offer response and SPL to meet all requirements

## Conformity Details:

- EN 62368-1:2014/AC:2015
- EN 62479:2010
- ETSI EN 301 489-1 V2.1.1 (2017-02)
- ETSI EN 301 489-17 V3.1.1 (2017-02)
- The IC-8FD complies with the essential requirements of directive 2014/53/EU article 3.

# Technical Specifications

## Design

8" Full Range with firedome

## Impedance

8Ω / 100V / 70V

## Tapping Watts

100V :- 40, 20, 10

70V :- 20, 10, 5,

## Power Handling (RMS)

40 Watts (continuous)

## Max. Power Handling (RMS)

80 Watts (program)

160 Watts (peak 10 ms)

## Sensitivity 2.83V / 1m

88 dB

## Max. SPL

103 dB (cont. max SPL / 1m)

109 dB peak

## Frequency Response ±3 dB

50 Hz - 20 kHz

## Dispersion

140° Conical

## SYSTEM OPERATION

### Recommended Amplification

-

### System Controller

OMEGA DSP Solutions

### Speaker Cables

Min - 2 x 1 mm<sup>2</sup>

Recommended 2 x 1.5mm<sup>2</sup>

## PRODUCT FEATURES

### Components

1 x 8" Coaxial Full Range Driver

### Crossover

Passive - 3 kHz

LPF -

HPF -

## Connectors

Spring loaded terminal

## Dimensions (mm) (Ø x h)

Ø270 x 185

## Hole Cutout (mm Ø)

Ø240

## Ceiling Thickness (mm)

10 - 35

## Weight (kg)

3.1

## Shipping Weight (kg)

3.2 (1 cabinet per carton)

## Colour

White RAL 9010

## Options

-

## Rigging

-

## HARDWARE

### Fitted as Standard

-

### Additional Descriptive Data

Attractive white colour ABS resin finish with complementary off white grill suits any decor.

## Installation Instructions

The installation of this OMEGA product couldn't be easier:

Before Installation set the speaker to correct tapping

1. Ensure there is enough clear space to house the speaker.
2. Take the template provided, position on the ceiling at the point where the speaker will be fitted, draw around the circle and cut a hole in the ceiling to fit.
3. Remove the grill from the speaker by gently pushing the mounting poles down until they ease the grill out, position the rear of the speaker facing into the hole. ( fig. 1)
4. Connect speaker to amplification/system ensuring all connections are correct. (fig. 2)
5. Turn the plastic fixing points until the ends are located over the ceiling, tighten the screw until the speaker is clamped on to the ceiling. (fig. 3)
6. Replace the speaker grill. (fig. 4)
7. Turn on music source and enjoy the amazing sound of the OMEGA loudspeaker.

## Mounting Instructions

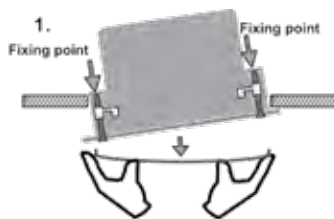


Fig.1

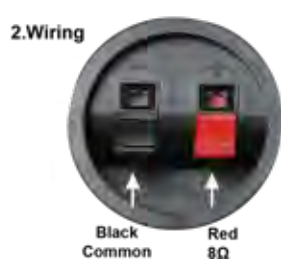


Fig.2

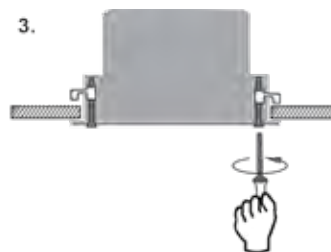


Fig.3

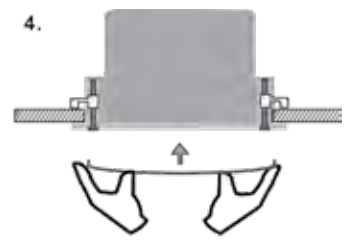


Fig.4

NB:- Images are for reference only, product connections may differ from those shown  
We reserve the right to change specifications without prior notice

## IC-8FD Dimensions

