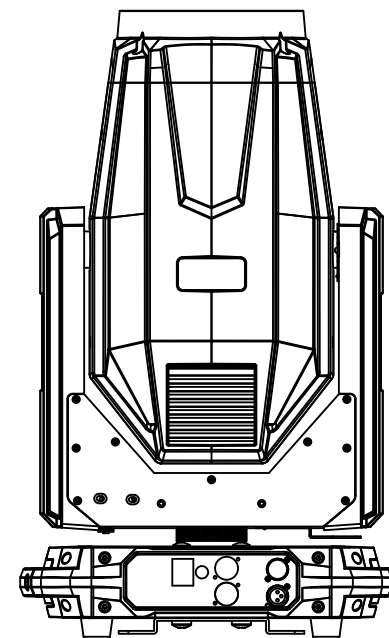


SI-249L+ BSW 380+



CE F IP20 t_a 40°C t_c 150°C



ADD 3rd Floor, No. 288, Guangzhu East Line, Pingwen, Lanhe Town, Nansha District,
Guangzhou, China
Tel. +86 20 8499 2310/2320/2330
Fax +86 20 8499 2360
E-mail info@color-imagination.com
Website www.color-imagination.com

**Follow
us on**



www.facebook.com/color.imagination.1



www.youtube.com/user/colorimaginationj



https://twitter.com/Color_lighting

User Manual

KEEP THIS MANUAL FOR FUTURE NEEDS

1 SAFETY INSTRUCTIONS



CAUTION

Becareful with your operations. With a dangerous voltage you can suffer a dangerous electric shock when touching wires!

This device has left the factory in perfect condition. In order to maintain this condition and to ensure a safe operation, it is absolutely necessary for the user to follow the safety instructions and warning notes written in this user manual.



IMPORTANT

Damages caused by the disregard of this user manual are not subject to warranty. The dealer will not accept liability for any resulting defects or problems.

If the device has been exposed to temperature changes due to environmental changes, do not switch it on immediately. The arising condensation could damage the device. Leave the device switched off until it has reached room temperature.

This device falls under protection-class I. Therefore it is essential that the device be earthed.

The electric connection must carry out by qualified person.

The device shall only be used with rate voltage and frequency.

Make sure that the available voltage is not higher than stated at the end of this manual.

Make sure the power cord is never crimped or damaged by sharp edges. If this would be the case, replacement of the cable must be done by an authorized dealer.

Always disconnect from the mains, when the device is not in use or before cleaning it. Only handle the power cord by the plug. Never pull out the plug by tugging the power cord.

During initial start-up some smoke or smell may arise. This is a normal process and does not necessarily mean that the device is defective, it should decrease gradually.

Please don't project the beam onto combustible substances.

Fixtures cannot be installed on combustible substances, keep more than 50cm distance with wall for smooth air flow, so there should be no shelter for fans and ventilation for heat radiation.

If the external flexible cable or cord of this luminaire is damaged, it shall be exclusively replaced by the manufacturer or his service agent or a similar qualified person in order to avoid a hazard.

9 MAINTENANCE AND CLEANING

The following points have to be considered during the inspection:

- 1) All screws for installing the devices or parts of the device have to be tightly connected and must not be corroded.
- 2) There must not be any deformations on the housing, color lenses, fixations and installation spots (ceiling, suspension, trussing).
- 3) Mechanically moved parts must not show any traces of wearing and must not rotate with unbalances.
- 4) The electric power supply cables must not show any damage, material fatigue or sediments.

Further instructions depending on the installation spot and usage have to be adhered by a skilled installer and any safety problems have to be removed.



CAUTION

Disconnect from mains before starting maintenance operation



In order to make the lights in good condition and extend the life time, we suggest a regular cleaning to the lights.

- 1) Clean the inside and outside lens each week to avoid the weakness of the lights due to accumulation of dust.
- 2) Clean the fan each week.
- 3) A detailed electric check by approved electrical engineer each three month, make sure that the circuit contacts are in good condition, prevent the poor contact of circuit from overheating.

We recommend a frequent cleaning of the device. Please use a moist, lint-free cloth. Never use alcohol or solvents.

There are no serviceable parts inside the device. Please refer to the instructions under "Installation instructions".

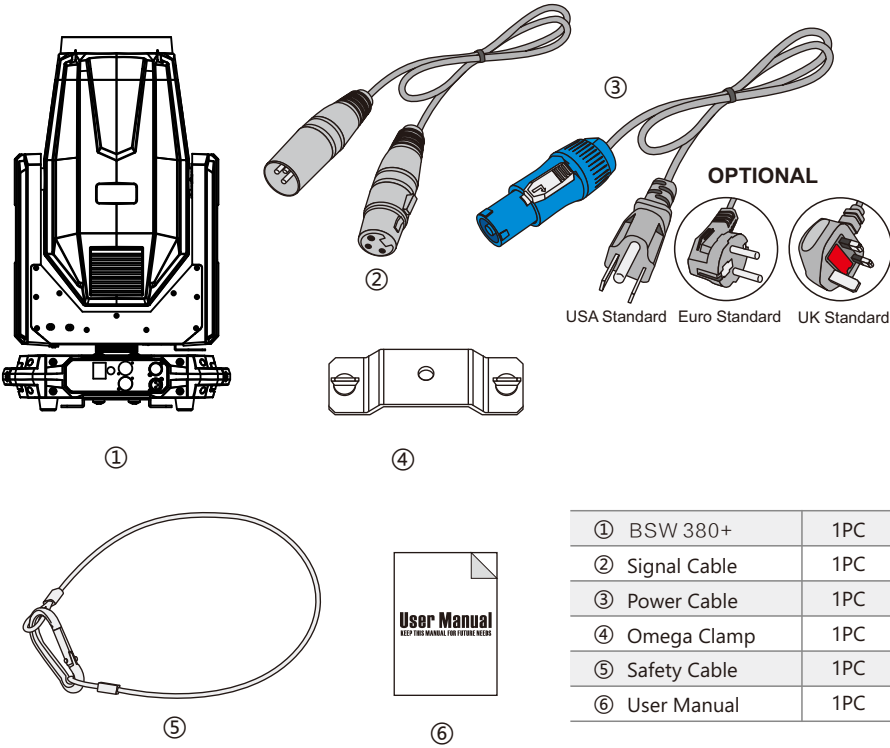
Should you need any spare parts, please order genuine parts from your local dealer.

			135-139	Shake slw to fast GOBO 13
			140-144	Shake slw to fast GOBO 14
			145-190	STREAM>> SLW TO FST
			191-192	STOP
			193-255	STREAM<< SLW TO FST
15	12	PRISM 1	0-127	NO PRISM
			128-255	PRISM 1
16	13	PRISM 1 ROTATE	0-127	INDEX PRISM 0-360°
			128-187	PRSMROT>>SLO TO FST
			189-195	PRISM 1 STOP ROT
			196-255	PRSMROT<<SLO TO FST
17	15	PRISM 2	0-127	NO PRISM
			128-255	PRISM 2
18	16	PRISM 2 ROTATE	0-127	INDEX PRISM 0-360 °
			128-187	PRSMROT>>SLO TO FST
			189-195	PRISM 2 STOP ROT
			196-255	PRSMROT<<SLO TO FST
19	16	FROST	0-127	NO FROST
			128-255	FROST
20	17	ZOOM	0-255	MAX TO MIN ZOOM
21	-	ZOOM fine	0-255	ZOOM FINE ADJ.
22	18	FOCUS	0-255	OUT TO IN
23	-	FOCUS fine	0-255	FOCUS FINE ADJ.
24	19	RESET/LAMP (HOLD 6 SEC FOR ACTIVATION)	100-105	LAMP OFF
			200-205	LAMP ON
			210-215	PAN/TILT RESET

2 UNPACKING

The BSW 380+ is a hybrid entertainment moving head light that integrates BEAM+SPOT+WASH in one fixture. It features a new and reliable OSRAM SIRIUS HRI 371W+ lamp with revolutionary technology. The electronic zoom ranges from 2°-50° with smooth and fast advantage. The fixture offers a short arc and compact design with a bright, even field of light, equating to a highly saturated color palette. The lamp equips with the reflector built-in, providing perfect lamp alignment. It is a fast and quiet moving head with a sharp parallel beam (perfectly defined edges), even spot and wash. This head offers a full complement of professional characteristics, including rotating gobo wheel, static gobo wheel, color wheel, 2 prisms, variable frost filter, motorized linear focus, motorized ZOOM, variable speed shutter/strobe; and mechanical dimmer, full color 180° reversible TFT display with 4 control buttons, etc. The fixture supports DMX, RDM (Remote Device Management)

It's fast and quiet operation moving head. The fixture is tuned with proper refresh rate for flicker free operation for TV and FILM. It's a perfect option for large scale live concerts, TV productions, road shows, theatre, etc.



3 FEATURES & SPECIFICATIONS

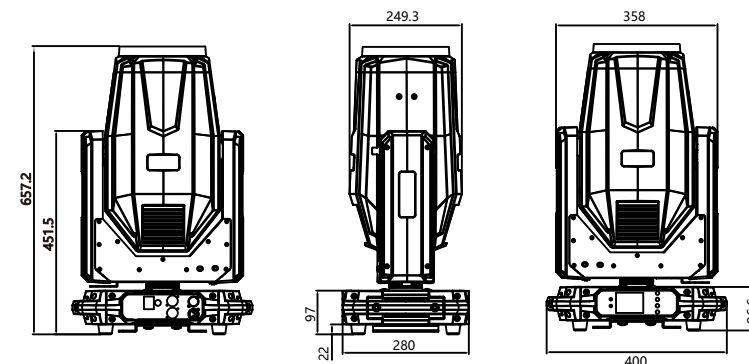
Features

OSRAM SIRIUS HRI 371W+ lamp
 Color Temperature: 7700K(+/-500K)
 CRI: ≥85(+/-5)
 Luminous Flux: 19000lm (source)
 Flicker free operation for broadcast TV and FILM
 Life Span: 3000H
 A set of high resolution and precise optics
 Large size front glass lens
 2°-50°Smooth and quiet linear motorized zoom
 Smooth electronic focus
 Zoom/focus time controllable
 PAN movement: 540° (8/16 bit)
 TILT movement: 270° (8/16 bit)
 Fast, quiet, smooth and precise 3-Phase motors
 Smooth, fast and precise resolution for PAN/TILT movement with low noise operation
 Scan position memory, auto reposition after unexpected movement
 PAN/TILT reversible
 1 Color wheels with 11 dichroic colors plus open (half color mode available)
 Variable direction rainbow effect with speed adjustable
 Fine control for color wheel
 Color time controllable
 1 Rotating gobo wheel with 7 rotatable and interchangeable glass gobos plus open with speed adjustable, stream effect, dithering effect and rotatable clockwise or anticlockwise
 Gobo indexing available
 Gobo size 25.5mm (external)/12mm (inner)
 1 Static gobo wheel with 14 gobos plus open
 Gobo overlay (gobo morphing)
 Fine control for gobo wheels
 Gobo time controllable
 16-Facet prism with variable speed and direction
 8+16-Facet linear prism with variable speed and direction
 Prism morphing effect
 Prism wheel fine control
 0-20Hz shutter/strobe effect with variable speed
 Preset variable/random strobe effect with variable speed
 0-100% Smooth linear mechanical dimming
 Fine control for dimming
 Dimming time controllables
 Frost filter (Hybrid effect for wash)
 Even and soft coverage
 19/24 DMX channels USITT DMX-512
 DMX512, master-slave, or auto operation
 DMX recorder and edit function integrated

			151-199	STREAM>> SLW TO FST
			200-202	STREAM STOP
			203-255	STREAM<< SLW TO FST
12	10	GOBO ROTATION	0-127	INDEX 0-360 °
			128-190	>>ROTATE SLW TO FST
			191-192	STOP ROTATION
			193-255	<<ROTATE SLW TO FST
13	-	GOBO ROTATE fine	0-255	GOBO ROT-FINE ADJ.
14	11	GOBO wheel 2 (STATIC)	0-4	OPEN
			5-9	GOBO 1
			10-14	GOBO 2
			15-19	GOBO 3
			20-24	GOBO 4
			25-29	GOBO 5
			30-34	GOBO 6
			35-39	GOBO 7
			40-44	GOBO 8
			45-49	GOBO 9
			50-54	GOBO 10
			55-59	GOBO 11
			60-64	GOBO 12
			65-69	GOBO 13
			70-74	GOBO 14
			75-79	Shake slow to fast GOBO 1
			80-84	Shake slow to fast GOBO 2
			85-89	Shake slow to fast GOBO 3
			90-94	Shake slow to fast GOBO 4
			95-99	Shake slow to fast GOBO 5
			100-104	Shake slow to fast GOBO 6
			105-109	Shake slow to fast GOBO 7
			110-114	Shake slow to fast GOBO 8
			115-119	Shake slow to fast GOBO 9
			120-124	Shake slw to fast GOBO 10
			125-129	Shake slw to fast GOBO 11
			130-134	Shake slw to fast GOBO 12

			40-44	COL 5
			45-49	COL 5+6
			50-54	COL 6
			55-59	COL 6+7
			60-64	COL 7
			65-69	COL 7+8
			70-74	COL 8
			75-79	COL 8+9
			80-84	COL 9
			85-89	COL 9+10
			90-94	COL 10
			95-99	COL 10+11
			100-104	COL 11
			105-109	COL 11+12
			110-114	COL 12
			115-119	COL 12+OPEN
			120-190	COL-SPN>>SLW TO FST
			191-192	STOP SPN
			193-255	COL-SPN<<SLW TO FST
10	-	COLOR fine	0-255	C-FINE ADJ.
11	9	GOBO WHEEL 1 (ROT)	0-10	OPEN
			11-20	GOBO 1
			21-30	GOBO 2
			31-40	GOBO 3
			41-50	GOBO 4
			51-60	GOBO 5
			61-70	GOBO 6
			71-80	GOBO 7
			81-90	Shake slow to fast GOBO 1
			91-100	Shake slow to fast GOBO 2
			101-110	Shake slow to fast GOBO 3
			111-120	Shake slow to fast GOBO 4
			121-130	Shake slow to fast GOBO 5
			131-140	Shake slow to fast GOBO 6
			141-150	Shake slow to fast GOBO 7

RDM available (Remote Device Management)
 Art-NET (Optional)
 Wireless Solution's wireless receiver system built-in (Optional)
 Shielded input signal protection for stable signal without interference
 RJ45 etherCON IN/OUT (Optional)
 3-Pin XLR connectors IN/OUT
 Software up-datable through DMX connectors
 Mult units up-datable in daisy chain
 Electronic ballast: OSRAM PT SIRIUS 370W-Unishape
 Electronic supply with active PFC
 PowerCON connectors IN/OUT
 -25°C to 45°C ambient temperature
 IP20 protection rating
 AC100-240V 50/60Hz
 580W Power consumption
 N.W.: 23.7kg
 G.W.: 28kg
 Product Dimensions: 280(D)*400(W)*657.2(H)mm
 Packing Dimensions: 500(D)*595(W)*680(H)mm



color



Static Gobo



Rotating Gobo

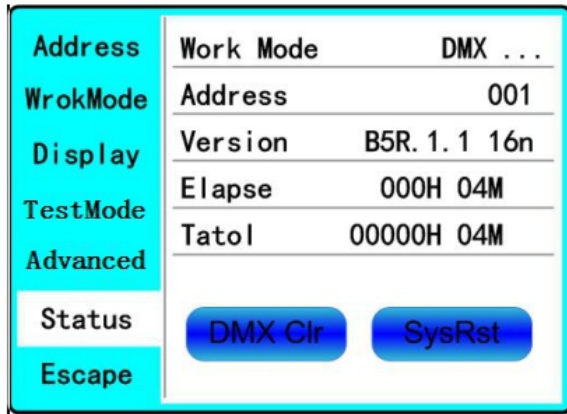


4 OPERATION INSTRUCTIONS

- The BSW 380+ is for beam effect for on-site decoration purpose.
- Don't turn on the fixture if it's been through severe temperature difference like after transportation because it might damage the light due to the environment changes. So make sure to operate the fixture until it is in normal temperature.
- This light should be keep away from strong shaking during any transportation or movement.
- Don't pull up the light by only the head, or it might cause damages to the mechanical parts.
- Don't expose the fixture in overheat, moisture or environment with too much dust when installing it. And don't lay any power cables on the floor. Or it might cause electronic shock to the people.
- Make sure the installation place is in good safety condition before installing the fixture.
- Make sure to put the safety chain and check whether the screws are screwed properly when installing the fixture.
- Make sure the lens are in good condition. It's recommended to replace the units if there are any damages or severe scratch.
- Make sure the fixture is operated by qualified personnel who knows the fixture before using.
- Keep the original packages if any second shipment is needed.
- Don't try to change the fixtures without any instruction by the manufacturer or the appointed repairing agencies.
- It is not in warranty range if there are any malfunctions from not following the user manual to operate or any illegal operation, like shock short circuit, electronic shock, lamp broke, etc.

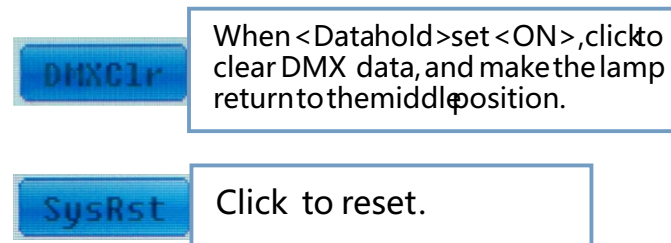
8 DMX CHANNELS

MODE 1 CHANNEL	MODE 2 CHANNEL	DESCRIPTION	VALUE	DEFINITION
1	1	PAN	0-255	0-540°
2	1	PAN fine	0-255	P-FINE ADJ.
3	3	TILT	0-255	0-270°
4	4	TILT fine	0-255	T-FINE ADJ.
5	5	P/T SPEED	0-255	FAST TO SLOW
6	6	DIMMER	0-255	0-100% DIMMER
7	-	DIMMER fine	0-255	D-FINE ADJ.
8	7	SHUTTER	0-3	CLOSED
			4-103	LINEAR STROBE
			104-107	OPEN
			108-207	RANDOM STROBE
			208-212	OPEN
			213-251	BURST STROBE
9	8	COLOR	252-255	OPEN
			0-4	OPEN
			5-9	OPEN+COL 1
			10-14	COL 2
			15-19	COL 2+3
			20-24	COL 3
			25-29	COL 3+4
			30-34	COL 4
			35-39	COL 4+5



page of status

- ♦ **Work Mode:** Show the current working mode.
- ♦ **Address:** Show the current address.
- ♦ **Version:** Show the version of the lamp.
- ♦ **Elapse:** Working hours after turn on.
- ♦ **Tatol:** Cumulative hours of operation



5 INSTALLATIONS

Cautions: For added protection mount the fixtures in areas outside walking paths, seating areas, or in areas where the fixture might be reached by unauthorized personnel.

Before mounting the fixture to any surface, make sure that the installation area can hold a minimum point load of 10 times the device's weight.

Fixture installation must always be secured with a secondary safety attachment, such as an appropriate safety cable.

Never stand directly below the device when mounting, removing, or servicing the fixture.

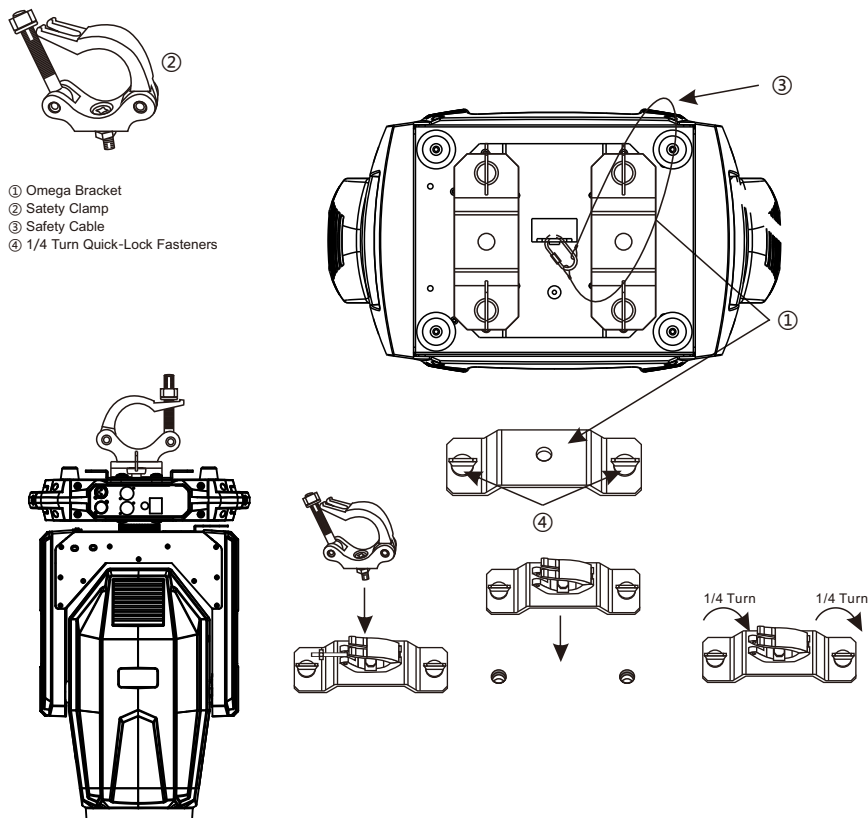
from a ceiling, or set on a flat level surface (see illustration below). Be sure this fixture is kept at least 16m away from any flammable materials (decoration etc.).

Always use and install the supplied safety cable as a safety measure to prevent accidental damage and/or injury in the event the clamp fails.

Mounting points: Overhead mounting requires extensive experience, including amongst others calculating working load limits, a fine knowledge of the installation material being used, and periodic safety inspection of all installation material and the fixture. If you lack these qualifications, do not attempt the installation yourself. Improper installation can result in bodily injury.

Be sure to complete all rigging and installation procedures before connecting the main power cord to the appropriate wall outlet.

Clamp Mounting: The BSW 380+ provides a unique mounting bracket assembly that integrates the bottom of the base, and the safety cable rigging point in one unit (see the illustration below). When mounting this fixture to truss be sure to secure an appropriately rated clamp to the included omega bracket using a M10 screw fitted through the center hole of the "omega bracket". As an added safety measure be sure to attached at least one properly rated safety cable to the fixture using on of the safety cable rigging point integrated in the base assembly.



Regardless of the rigging option you choose for your BSW 380+ , always be sure to secure your fixture with a safety cable. The fixture provides a built-in rigging point for a safety cable on the hanging bracket as illustrated above. Be sure to only use the designated rigging point for the safety cable and never secure a safety cable to a carrying handle.

Address	PAN Inset	OFF
WorkMode	TILT Inset	OFF
Display	P/T Rectify	ON
TestMode	PAN Offset	010
	TILT Offset	010
Advanced	Lamp when	Power ON
Status	Data hold	OFF
Escape	Factory Setting	

page of run parameter

- ♦ **Pan Invert: Reverse PAN move**
OFF--> Pan Normal move.(Default)
ON--> Reverse PAN move.
- ♦ **Tilt Invert: Reverse TILT move**
OFF--> Tilt Normal move.(Default)
ON--> Reverse Tilt move.
- ♦ **P/T Rectify: Disable or enable position rectify function.**
OFF--> Disable P/T rectify
ON--> Enable P/T rectify-(Default)
- ♦ **Pan Offset:** Set PAN original position. **Default: 10**
- ♦ **Tilt Offset:** Set TILT original position. **Default: 10**
- ♦ **Lamp when:**
PowerON--> Turn on the lamp when power on.(Default)
RstDone--> Turn on the lamp after reset.
Manual--> Manually turn on the lamp.
- ♦ **Data hold:**
OFF--> When no DMX signal,return to middle position.(Default)
ON--> When no DMX signal,stop in the final position.
- ♦ **Factory Setting:** Restore all parameter to factory setting.

- ♦ **Language:** English / 中文.
- ♦ **Screen Saver:** when panel is idle(these is no operation in 10 second), displayer will enter saver status.

OFF--> No screen saver.

Mode1--> Power-saving mode, turn off the display.

Mode2--> Displays the current address.

Mode3--> Displays the icon and the current working mode.(Default)

- ♦ **Screen Rotion: To turning display.**

ON--> Normal display.(Default)

OFF--> 180° turning display.

- ♦ **Touch enable:** Disable or enable touch function,.

ON--> Enable touch function.(Default)

OFF--> Dosable touch function.

- ♦ **Touch adjust:** Adjust touch function. Normally, not enter this item.

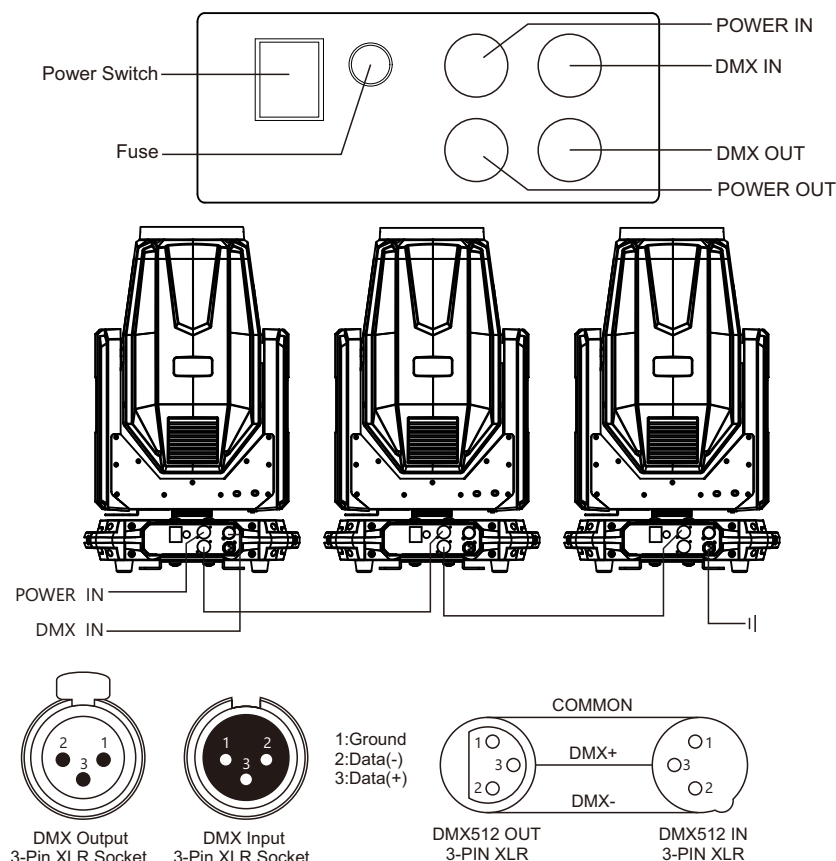
Address	PAN	000
WorkMode	TILT	000
Display	FOCUS	000
TestMode	COLOR	000
	GOBO	000
Advanced	PRISM	000
Status	FROST	000
Escape	STROBE	000

page of Test

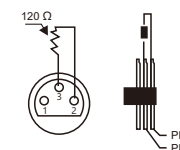
- ♦ **PAN:** range for 0 to 255;
- ♦ **TILT:** range for 0 to 255;
- ♦ **FOCUS:** range for 0 to 255;
- ♦ **COLOR:** range for 0 to 255;
- ♦ **GOBO:** range for 0 to 255;
- ♦ **PRISM:** range for 0 to 255;
- ♦ **FROST:** range for 0 to 255;;
- ♦ **STROBE:** range for 0 to 255;

6 DMX-512 CONTROL CONNECTIONS

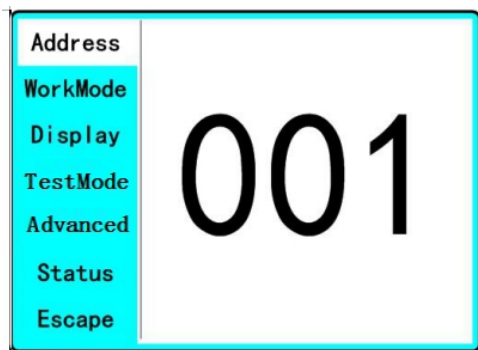
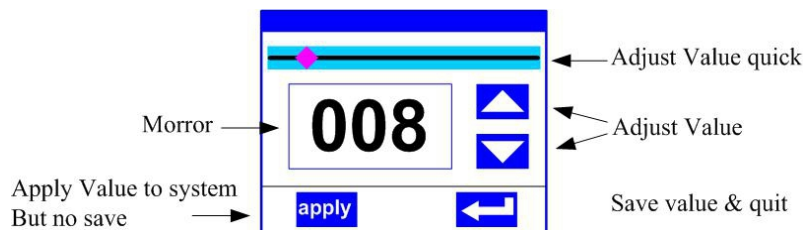
Connect the provided XLR cable to the female 3-pin XLR output of your controller and the other side to the male 3-pin XLR input of the moving head. You can chain multiple Moving head together through serial linking. The cable needed should be two core, screened cable with XLR input and output connectors. Please refer to the diagram below.
DMX-512 connection with DMX terminator



For installations where the DMX cable has to run a long distance or is in an electrically noisy environment, such as in a discotheque, it is recommended to use a DMX terminator. This helps in preventing corruption of the digital control signal by electrical noise. The DMX terminator is simply an XLR plug with a 120 Ω resistor connected between pins 2 and 3, which is then plugged into the output XLR socket of the last fixture in the chain. Please see illustrations below.



7 MENU OPERATIONS



page of DMX Address

MODE--> WorkMode: Set Light work mode

Enter the page of 'WorkMode' as shown in Figure 8 and modify setting. Can set light work mode, control lamp and DMX channel mode.

Address	DMX Ctrl	✓
WorkMode	Auto Run	
Display	Sound Ctrl	
TestMode	M/S choose	OFF
Advanced	Light Switch	OFF
Status	Channel Qty	sample
Escape		

page of work mode

- ♦ **DMX Ctrl:** Choose to set DMX Mode,
- ♦ **Auto Run:** Choose to set Auto Mode,
- ♦ **Sound Ctrl:** Choose to set Sound Mode,
- ♦ **M/S Choose:** Available just in 'AUTO RUN' or 'SOUND Ctrl' mode.
ON--> Master. (Data will be send to other slave lamp immediately.)
OFF--> Slaver. (NOT send data to other lamp via DMX Cable). (**Default**)
- ♦ **Light Switch:**
ON--> Turn on the light,
OFF--> Turn off the light.
- ♦ **Channel Qty:** Light support 2 DMX Channel mode: sample or extend.
Simple --> 16CH. (**Default**)
Expand--> 20CH(or null).

Address	语言	English
WorkMode	Screen saver	Mode3
Display	Screen rotation	OFF
TestMode	Touch Enable	ON
Advanced	Touch Rectify	
Status		
Escape		

page of display