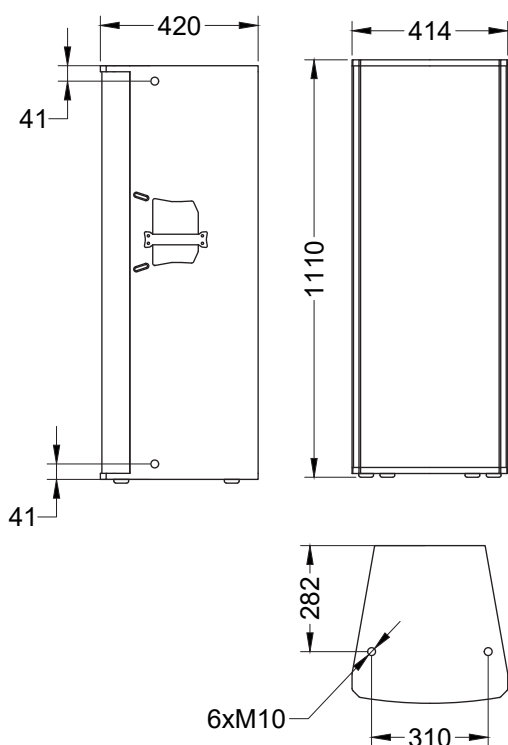
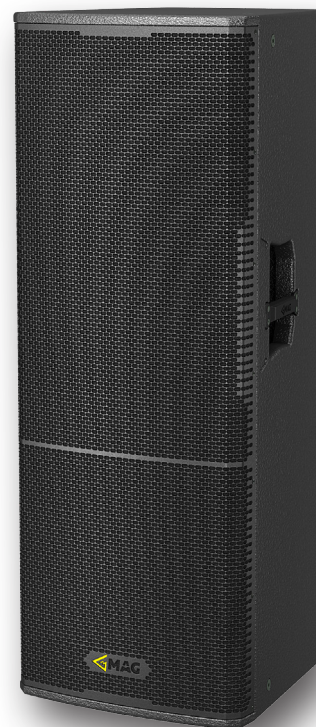


Z 355

FULL-RANGE PASSIVE SPEAKER

Z series was created to deliver the power and professional sound quality into various indoor and outdoor spaces while keeping budget considerations in check.

Z 355 is a powerful passive 2x 15"+1" speaker, designed for FOH and installed sound. Increased enclosure size and power capacity gives Z 355 extensive low-frequency performance, suitable for small concerts and club applications.



Main features:

- 650W nominal power
- Two 15" woofers with 2,5" voice coil
- 1" HF driver with 1,75" voice coil
- 138 dB Max SPL

| | |
|--|---|
| Frequency Response (-10dB) | 40 - 20000 Hz |
| Max SPL (calculated) | 137 dB |
| LF Driver | 2x15", 2,5" VC |
| HF Driver | 1", 1,75" VC |
| Nominal Coverage Angle (Horizontal x Vertical) | 100 x 50 deg |
| Amplifier power | 800+400 W |
| Amplifier | Class D, fan cooling, DSP with phase-linear FIR |
| Input sensitivity | 0 dBV (1 V RMS) |
| Connectors | XLR input, XLR output, Powercon mains |
| Dimensions (WxHxD) | 414x1110x420 mm |
| Net weight | 43 kg |
| Shipping weight | 46 kg |
| Mounting | 10x M10 mounting points |
| Enclosure material | Plywood; wear-resistant paint |
| Grill | Steel grill, polymer protective net |

With dedication to constant improvement of the products, manufacturer may change the listed specifications without prior notice