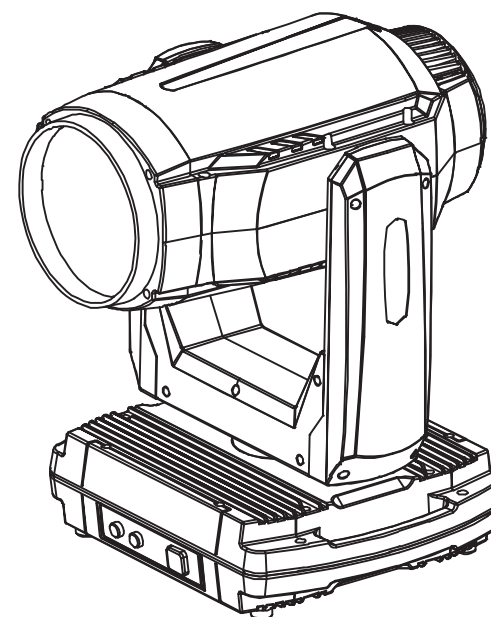


SI-176B IP3500



ADD 3rd Floor, No. 288, Guangzhu East Line, Pingwen, Lanhe Town, Nansha District,
Guangzhou, China
Tel. +86 20 8499 2310/2320/2330
Fax +86 20 8499 2360
E-mail info@color-imagination.com
Website www.color-imagination.com

**Follow
us on**



www.facebook.com/color.imagination.1



www.youtube.com/user/colorimaginationj



twitter.com/colorimaginej

CE F  IP65 LED  0.2m  t_a 40°C t_c 150°C

User Manual

KEEP THIS MANUAL FOR FUTURE NEEDS

1 SAFETY INSTRUCTIONS



CAUTION

Becareful with your operations. With a dangerous voltage you cansuffer a dangerous electric shock when touching wires!

This device has left the factory in perfect condition. In order to maintain this condition and to ensure a safe operation, it is absolutely necessary for the user to follow the safety instructions and warning notes written in this user manual.



IMPORTANT

Damages caused by the disregard of this user manual are not subject to warranty. The dealer will not accept liability for any resulting defects or problems.

If the device has been exposed to temperature changes due to environmental changes, do not switch it on immediately. The arising condensation could damage the device. Leave the device switched off until it has reached room temperature.

This device falls under protection-class I. Therefore it is essential that the device be earthed.

The electric connection must carry out by qualified person.

The device shall only be used with rate voltage and frequency.

Make sure that the available voltage is not higher than stated at the end of this manual.

Make sure the power cord is never crimped or damaged by sharp edges. If this would be the case, replacement of the cable must be done by an authorized dealer.

Always disconnect from the mains, when the device is not in use or before cleaning it. Only handle the power cord by the plug. Never pull out the plug by tugging the power cord.

During initial start-up some smoke or smell may arise. This is a normal process and does not necessarily mean that the device is defective, it should decrease gradually.

Please don't project the beam onto combustible substances.

Fixtures cannot be installed on combustible substances, keep more than 50cm distance with wall for smooth air flow, so there should be no shelter for fans and ventilation for heat radiation.

If the external flexible cable or cord of this luminaire is damaged, it shall be exclusively replaced by the manufacturer or his service agent or a similar qualified person in order to avoid a hazard.

10 MAINTENANCE AND CLEANING

The following points have to be considered during the inspection:

- 1) All screws for installing the devices or parts of the device have to be tightly connected and must not be corroded.
- 2) There must not be any deformations on the housing, color lenses, fixations and installation spots (ceiling, suspension, trussing).
- 3) Mechanically moved parts must not show any traces of wearing and must not rotate with unbalances.
- 4) The electric power supply cables must not show any damage, material fatigue or sediments.

Further instructions depending on the installation spot and usage have to be adhered by a skilled installer and any safety problems have to be removed.



CAUTION

Disconnect from mains before starting maintenance operation.



In order to make the lights in good condition and extend the life time, we suggest a regular cleaning to the lights.

- 1) Clean the inside and outside lens each week to avoid the weakness of the lights due to accumulation of dust.
- 2) Clean the fan each week.
- 3) A detailed electric check by approved electrical engineer each three month, make sure that the circuit contacts are in good condition, prevent the poor contact of circuit from overheating.

We recommend a frequent cleaning of the device. Please use a moist, lint- free cloth. Never use alcohol or solvents.

There are no serviceable parts inside the device. Please refer to the instructions under "Installation instructions".

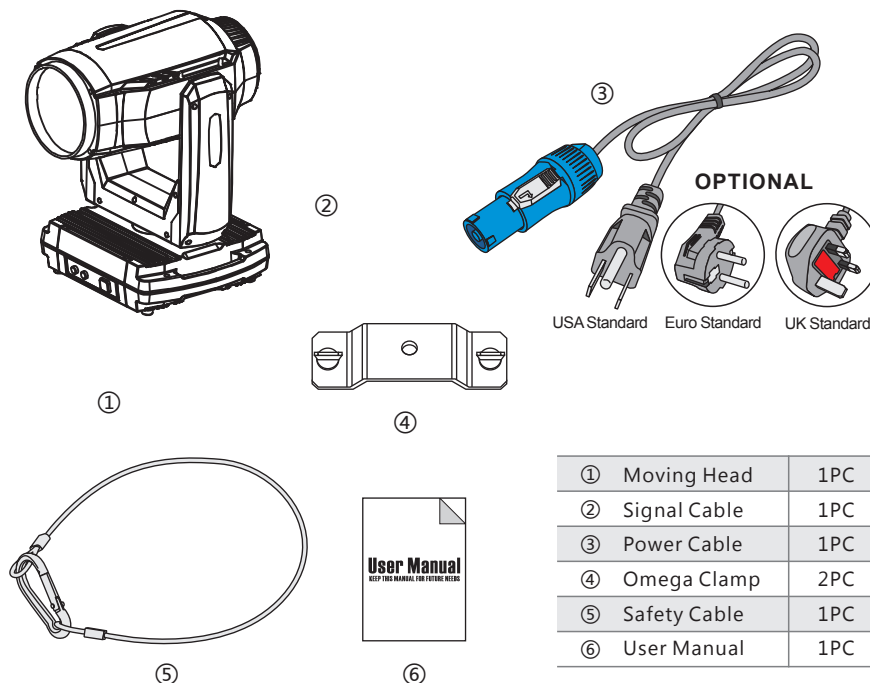
Should you need any spare parts, please order genuine parts from your local dealer.

2 UNPACKING

Thank you for choosing our IP3500. For your own safety, please read this manual before installing the device. This manual covers the important information on installation and applications. Please install and operate the fixture with following instructions. Meanwhile, please keep this manual well for future needs.

The IP3500 is made of a new type of high temperature strength of engineering plastics and cast aluminum casing with nice outlook. The fixture is designed and manufactured strictly following CE standards, complying with international standard DMX512 protocol. It's available independently controlled and linkable with each other for operation. And it is applicable for large-scale live performances, theater, studio, nightclubs and discos.

The IP3500 adopts a 350W white LED lamp which features high brightness and stability. Please carefully unpack it when you receive the fixture and check whether it is damaged during the transportation. And please check whether the following items are included inside the box:



①	Moving Head	1PC
②	Signal Cable	1PC
③	Power Cable	1PC
④	Omega Clamp	2PC
⑤	Safety Cable	1PC
⑥	User Manual	1PC

3 *FEATURES & SPECIFICATIONS*

Features

IP65 protection rate

A PHILIP MSD Silver 350W (17R) PRO lamp included, 7500K

Electronic ballast

Intelligent lamp protection when over heat

1000 Hours average lamp life span

No need for adjustment of reflector or lamp

175mm High resolution anti-reflection glass lenses

2°Beam angle

540°PAN and 270° TILT movement

Automatic Pan / Tilt position correction

16-bit smooth and precise resolution for PAN/TILT movement

Fast, quiet and accurate Pan / Tilt positioning

PAN time controllable from slow to fast

Static gobo wheel with 11 gobos plus open with gobo shaking

Gobo time controllable from fast to slow

CMY system plus CTO

Color wheel 1 with 11 colors plus open

Color wheel 2 with Cyan

Color wheel 3 with Magenta

Color wheel 4 with Yellow

Two color modes (Full color mode and half-color mode)

Variable direction rainbow effect with speed adjustable

Color time controllable from fast to slow

8-Facet circular prism with speed adjustable and variable direction

16-Facet circular prism with speed adjustable and variable direction

Prisms combined available

Frost Filter (Hybrid effect for Wash)

Macro-function for gobos/prism combinations

Dual flag mechanical dimming system

Variable speed strobe effect

Preset variable/random strobe and dimming pulse effects

Motor driven focus from near to far

Focus time controllable from fast to slow

2 DMX channel modes, 16CH/22CH

DMX, stand-alone, master/slave, sound activated mode

DMX recorder and edit function integrated

	21	PAN Time	0-255	Max to min speed
	22	Gobo Time	0-255	Max to min speed

11	11	Static Gobo Wheel	32-47	Gobo 2
			48-63	Gobo 3
			64-79	Gobo 4
			80-95	Gobo 5
			96-100	Gobo 6
			101-105	Gobo 7
			106-110	Gobo 8
			111-115	Gobo 9
			116-120	Gobo 10
			121-125	Gobo 11
			126-140	Gobo 12
			141-155	Gobo 13
			156-170	Gobo 14
			171-185	Gobo 15
			186-200	Forward rotation from slow to fast
			201-205	Rotation stop
			206-220	Backward rotation from slow to fast
			221-235	Gobo shaking effect 1 from fast to slow
			236-255	Gobo shaking effect 2 from fast to slow
9	12	Prism 1	0-19	Open/White
			20-255	Prism 1 ON
10	13	Prism 1 Rotation	0-63	Prism 1 Rotation Stop
			64-127	Forward rotation from slow to fast
			128-191	Prism 1 Rotation Stop
			192-255	Backward rotation from slow to fast
11	14	Prism 2	0-19	Open/White
			20-255	Prism 2 ON
12	15	Prism 2 Rotation	0-63	Prism 2 Rotation Stop
			64-127	Forward rotation from slow to fast
			128-191	Prism 2 Rotation Stop
			192-255	Backward rotation from slow to fast
13	16	Frost	0-19	No function
			20-255	Frost ON
14	17	Focus	0-255	Focus
15	18	Reset	0-020	No function
			021-100	PAN/TILT reset
			101-255	All function reset
16	19	Control Function	0-49	Lamp ON
			50-100	Lamp OFF
			101-255	Fan power decrease
	20	Special Function	0-88	Internal program 1
			89-160	Internal program 2
			161-255	Internal program 3

RDM available, wireless system optional

2.4" TFT LCD touch screen display with 4 light-touch control buttons and chargeable battery for DMX address setting and other functions setting even without power

180°Display reversible

Constant temperature readout / management function

Software update available through DMX cable

Lamp life readable

IP65 power cable IN

IP65 DMX cables IN/OUT

Input signal protection function achieving stable signal without interference

Fan cooling system combined with natural aluminum heat sink

Stylish housing integrated with aluminum and +PA66 plastic, high temperature resistant, anti UV and anti aging capability

2 x 1/4 turn fastening Omega clamps

1 x Safety attachment point

Specifications

Input Voltage: AC90-260V 50/60Hz

LED Quantities: 1*PHILIP MSD Silver 350W (17R) lamp

Control Signal: DMX512, master-slave and sound activated or auto operation

Control Channel: 16CH/22CH DMX Channels

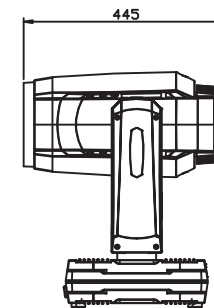
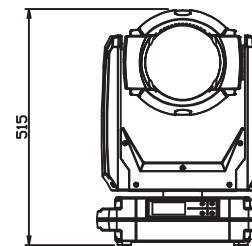
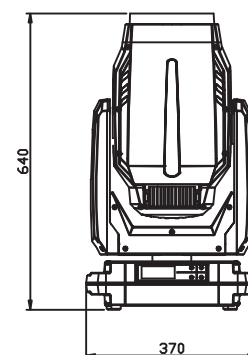
Power Consumption: 750W

Dimensions: 290(D)mm*370(W)mm*640(H)mm

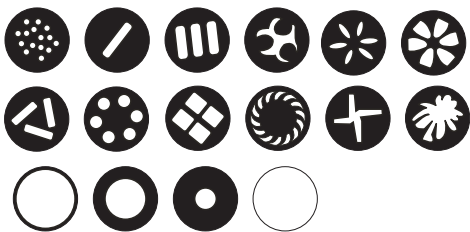
Packing Dimensions: 490(D)mm*570(W)mm*850(H)mm

Net Weight: 20.2kg

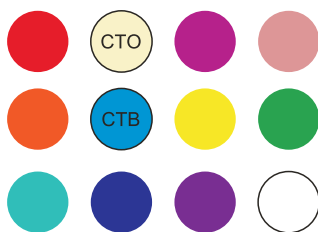
Gross Weight: 23.5kg



Static gobos



Colors

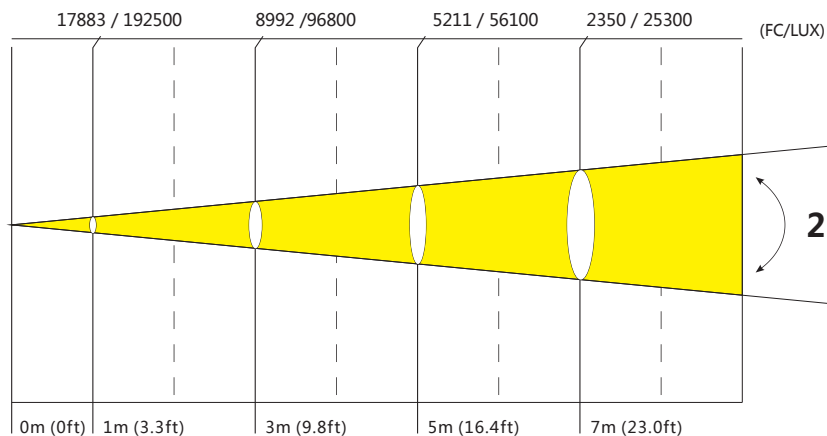


9 DMX CHANNELS

Mode/Channel		Function	Values	Description
16CH	22CH			
1	1	PAN	0-255	PAN movement, 540°
	2	PAN Fine	0-255	Fine control of PAN movement
2	3	TILT	0-255	TILT movement, 270°
	4	TILT Fine	0-255	Fine control of TILT movement
	5	Speed	0-255	Max to min speed for PAN/TILT
3	6	Color Wheel 1	0-15	Open/White
			16-30	Color 1
			31-45	Color 2
			46-70	Color 3
			71-85	Color 4
			86-100	Color 5
			101-115	Color 6
			115-200	Cyan from light to deep
			201-221	Forward rotation from slow to fast
			221-234	Open/White
			234-255	Backward rotation from slow to fast
4	7	Color Wheel 2	0-50	Open/White
			115-200	Magenta M from light to deep
			201-221	Forward rotation from slow to fast
			221-234	Open/White
			234-255	Backward rotation from slow to fast
5	8	Color Wheel 3	0-50	Open/White
			115-200	Yellow from light to deep
			201-221	Forward rotation from slow to fast
			221-234	Open/White
			234-255	Backward rotation from slow to fast
6	9	Shutter/ Strobe	0-005	Shutter closed
			006-101	Strobe effect from slow to fast
			102-107	Shutter open
			108-207	Pulse strobe effect from slow to fast
			208-212	Shutter open
			213-225	Slow random strobe effect
			226-238	Fast random strobe effect
			239-251	Shutter open
			252-255	Breathing strobe effect
7	10	Dimmer	0-255	Dimmer from dark to bright
8	11	Static Gobo Wheel	0-15	Open/White
			16-31	Gobo 1

4 PHOTOMETRIC DATA

Photometric Beam Angle Data 2° Beam Angle $LUX \times 0.0929 = FC$



8 MENU OPERATIONS

MENU	Dmx address	Cancel		DMX address setting(cancel)
		Enter		DMX address setting(enter)
	CNFC	DMX channel mode	Standards mode	Standard channel
			Exoanded mode	Extend channel
		DMXS	PRCA	Wire DMX Input(Give priority)
			ONCA	Wire DMX Input
			ONvR	Wireless DMX Input(Give priority)
			PRvR	Wireless DMX Input
	Language	English		English language
		Chinese		Chinese language
	Display	Nornal		Display setting
		Reverse		Display setting
	Backlight	ON		Display backlight bright
		30S		Display backlight 30s auto put out
	Pan inverse	NO		Pan Inverse
		YES		Pan reverse
	Tilt inverse	NO		Tilt Inverse
		YES		Tilt reverse
	Pan/Tilt feedback	NO		Pan/Tilt restore function close
		YES		Pan/Tilt restore function open
	Lamp set	NO		Lamp put out
		YES		Lamp light up
	Fixture test	Auto Test		Auto test program
			Color wheel	Manual test color wheel
		Manual Test	Strobe	Manual test strobe
			Dimmer	Manual test dimmer
			Gobo	Manual test gobo wheel
			Prism 1	Manual test Prism 1
			Prism 1 rotation	Manual test Prism 1 rotation
			Prism 2	Manual test Prism 1
			Prism 2 rotation	Manual test Prism 1 rotation
			Frog	Manual test frog
			Zoom	Manual test zoom
			Pan	Manual test Pan
			Tilt	Manual test Tilt
			Ctrl	Manual test lamp control
	Factory settings	NO		Don't restore the default Settings
		YES		Restore the default Settings
	Frimeare Version			Software version

5 OPERATION INSTRUCTIONS

- The IP3500 is for beam effect for on-site decoration purpose.
- Don't turn on the fixture if it's been through severe temperature difference like after transportation because it might damage the light due to the environment changes. So make sure to operate the fixture until it is in normal temperature.
- This light should be keep away from strong shaking during any transportation or movement.
- Don't pull up the light by only the head, or it might cause damages to the mechanical parts.
- Don't expose the fixture in overheat, moisture or environment with too much dust when installing it. And don't lay any power cables on the floor. Or it might cause electronic shock to the people.
- Make sure the installation place is in good safety condition before installing the fixture.
- Make sure to put the safety chain and check whether the screws are screwed properly when installing the fixture.
- Make sure the lens are in good condition. It's recommended to replace the units if there are any damages or severe scratch.
- Make sure the fixture is operated by qualified personnel who knows the fixture before using.
- Keep the original packages if any second shipment is needed.
- Don't try to change the fixtures without any instruction by the manufacturer or the appointed repairing agencies.
- It is not in warranty range if there are any malfunctions from not following the user manual to operate or any illegal operation, like shock short circuit, electronic shock, lamp broke, etc.

6 INSTALLATIONS

Cautions: For added protection mount the fixtures in areas outside walking paths, seating areas, or in areas were the fixture might be reached by unauthorized personnel.

Before mounting the fixture to any surface, make sure that the installation area can hold a minimum point load of 10 times the device's weight.

Fixture installation must always be secured with a secondary safety attachment, such as an appropriate safety cable.

Never stand directly below the device when mounting, removing, or servicing the fixture.

from a ceiling, or set on a flat level surface (see illustration below). Be sure this fixture is kept at least 0.5m (1.5 ft) away from any flammable materials (decoration etc.).

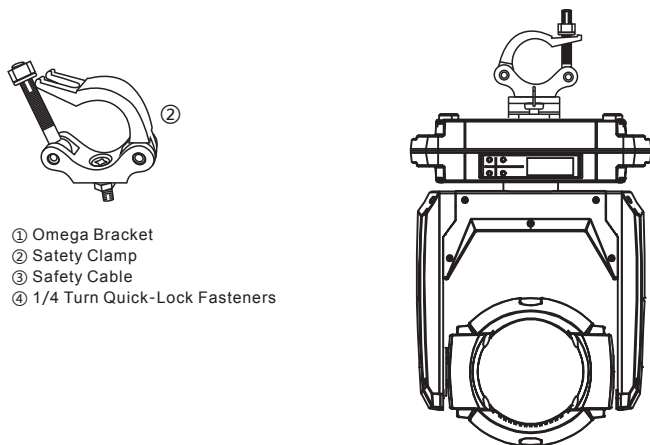
Always use and install the supplied safety cable as a safety measure to prevent accidental damage and/or injury in the event the clamp fails.

Mounting points: Overhead mounting requires extensive experience, including amongst others calculating working load limits, a fine knowledge of the installation material being used, and periodic safety inspection of all installation material and the fixture. If you lack these qualifications, do not attempt the installation yourself. Improper installation can result in bodily injury.

Be sure to complete all rigging and installation procedures before connecting the main power cord to the appropriate wall outlet.

Clamp Mounting: The IP3500 provides two unique mounting bracket assembly that integrates the bottom of the base, the included "Omega Bracket," and the safety cable rigging point in one unit (see the illustration below). When mounting this fixture to truss be sure to secure an appropriately rated clamp to the included omega bracket using a M10 screw fitted through the center hole of the "omega bracket". As an added safety measure be sure to attached at least one properly rated safety cable to the fixture using on of the safety cable rigging point integrated in the base assembly.

Regardless of the rigging option you choose for your IP3500, always be sure to secure your fixture with a safety cable. The fixture provides a built-in rigging point for a safety cable on the hanging bracket as illustrated above. Be sure to only use the designated rigging point for the safety cable and never secure a safety cable to a carrying handle.

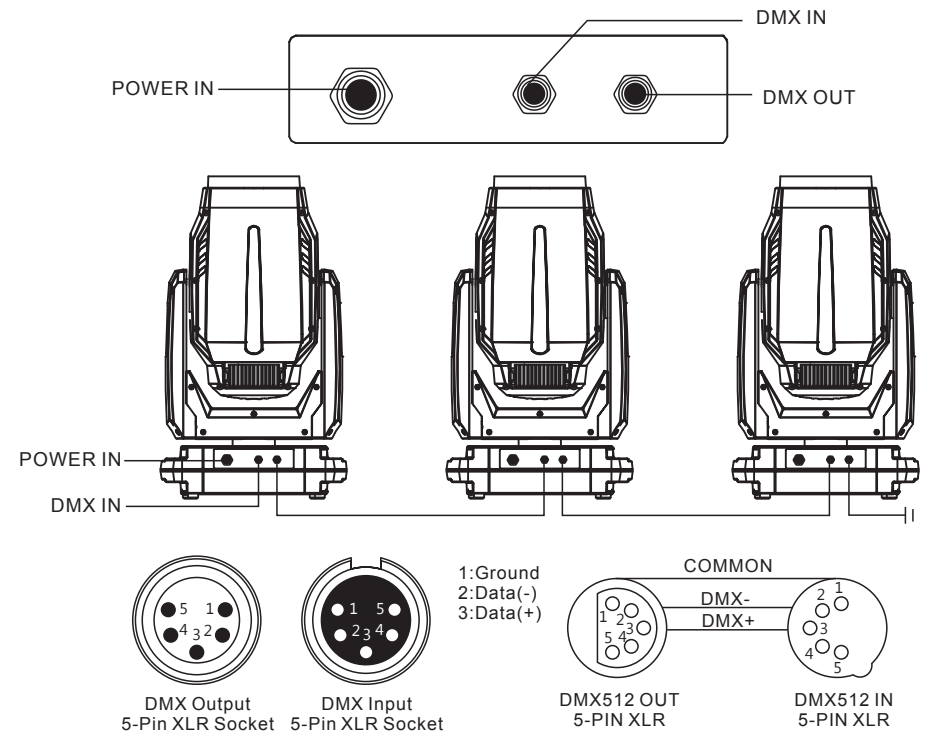


- ① Omega Bracket
- ② Safety Clamp
- ③ Safety Cable
- ④ 1/4 Turn Quick-Lock Fasteners

7 DMX-512 CONTROL CONNECTIONS

Connect the provided XLR cable to the female 5-pin XLR output of your controller and the other side to the male 5-pin XLR input of the moving head. You can chain multiple Moving head together through serial linking. The cable needed should be two core, screened cable with XLR input and output connectors. Please refer to the diagram below.

DMX-512 connection with DMX terminator



For installations where the DMX cable has to run a long distance or is in an electrically noisy environment, such as in a discotheque, it is recommended to use a DMX terminator. This helps in preventing corruption of the digital control signal by electrical noise. The DMX terminator is simply an XLR plug with a 120 Ω resistor connected between pins 2 and 3, which is then plugged into the output XLR socket of the last fixture in the chain. Please see illustrations below.

